

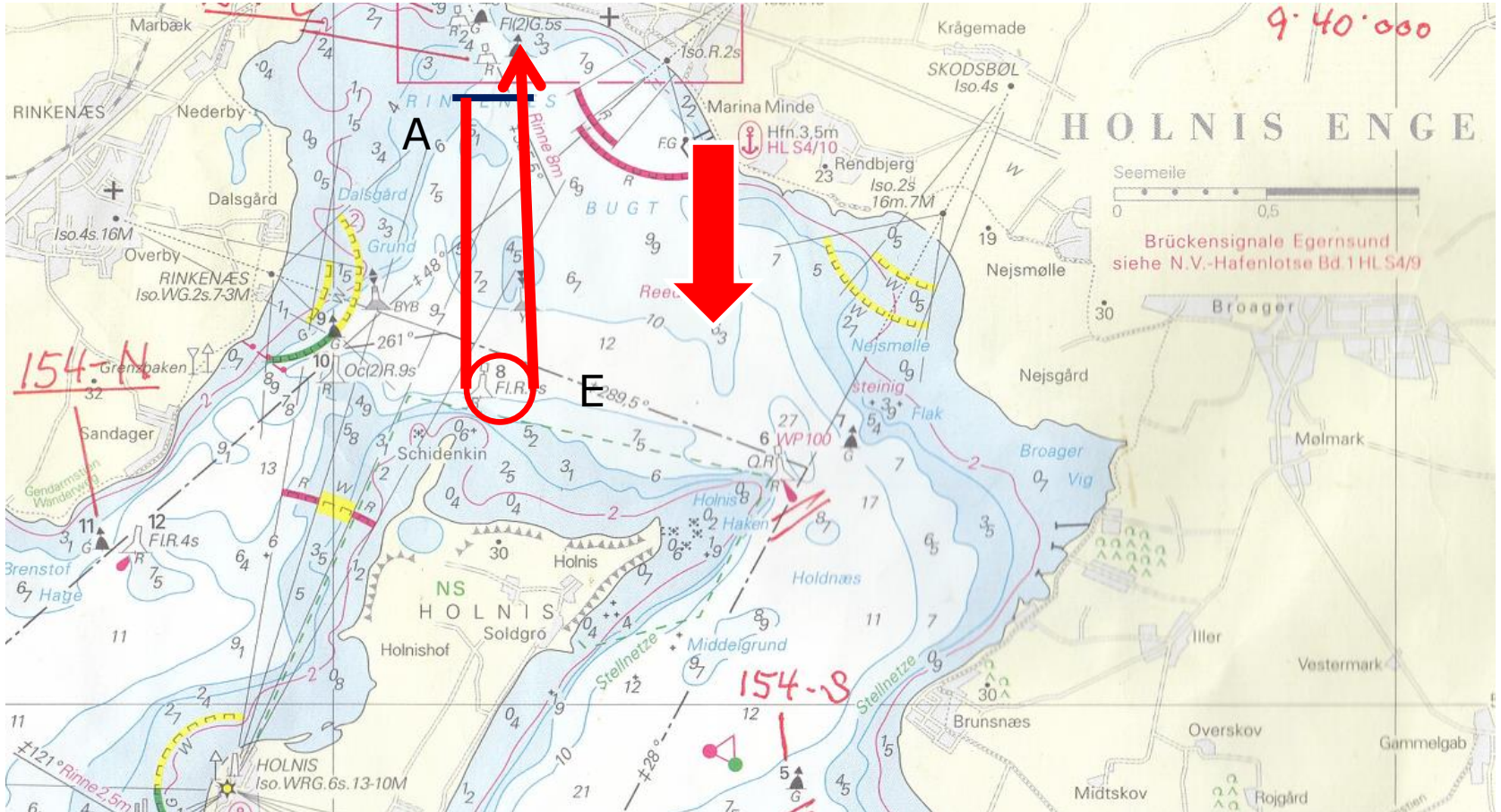
# Sejltid & distancer

**Start tid: 18:30**  
**Slut tid: 20:45**  
**Sejltid ca 2 timer**

**Fart 3 mil = bane på 6 Mil**  
**Fart 4 mil = bane på 8 Mil**

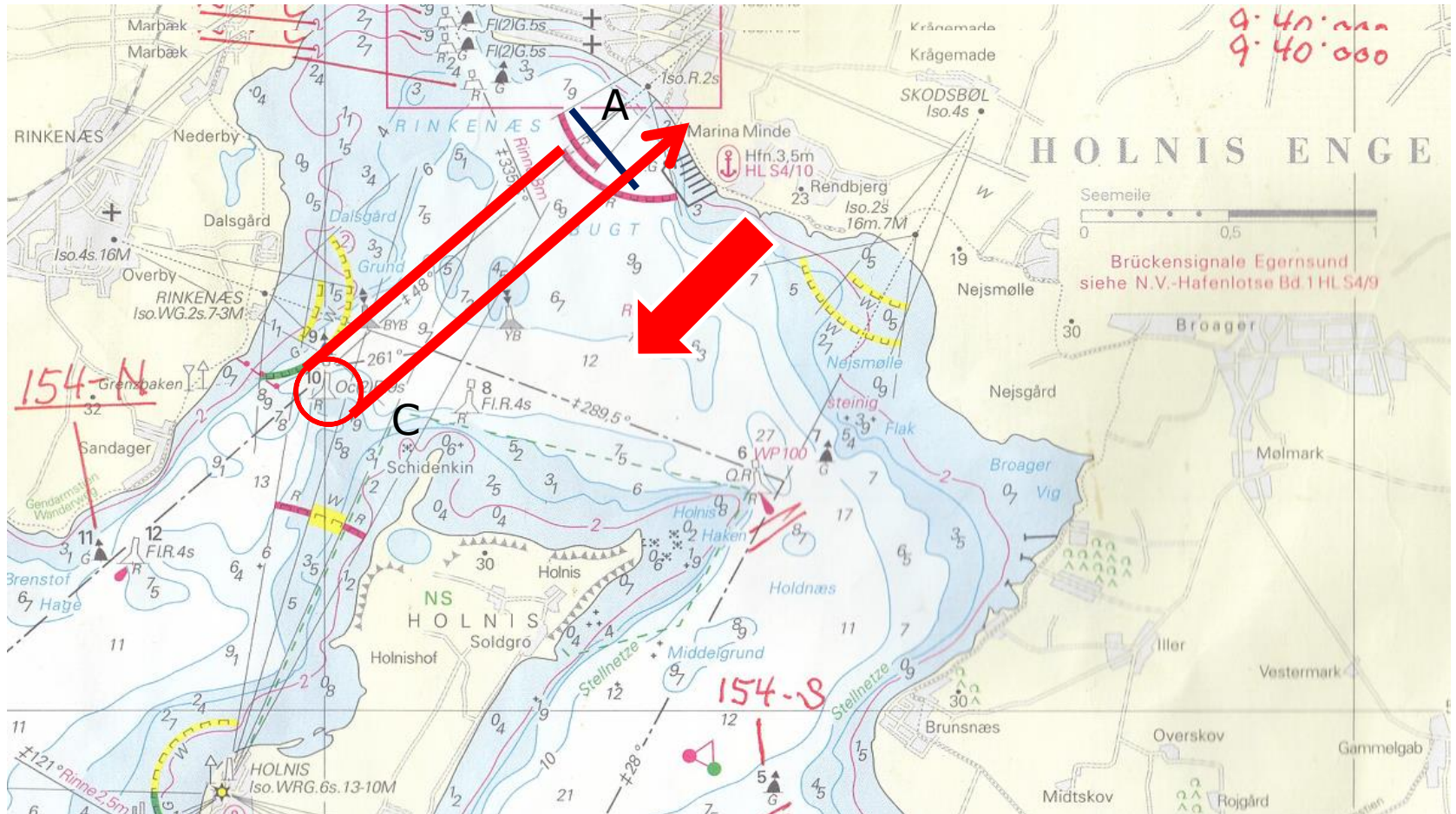
U - 1

NORD  
2 Mil  
Kryds 1 Mil  
Lænsestart



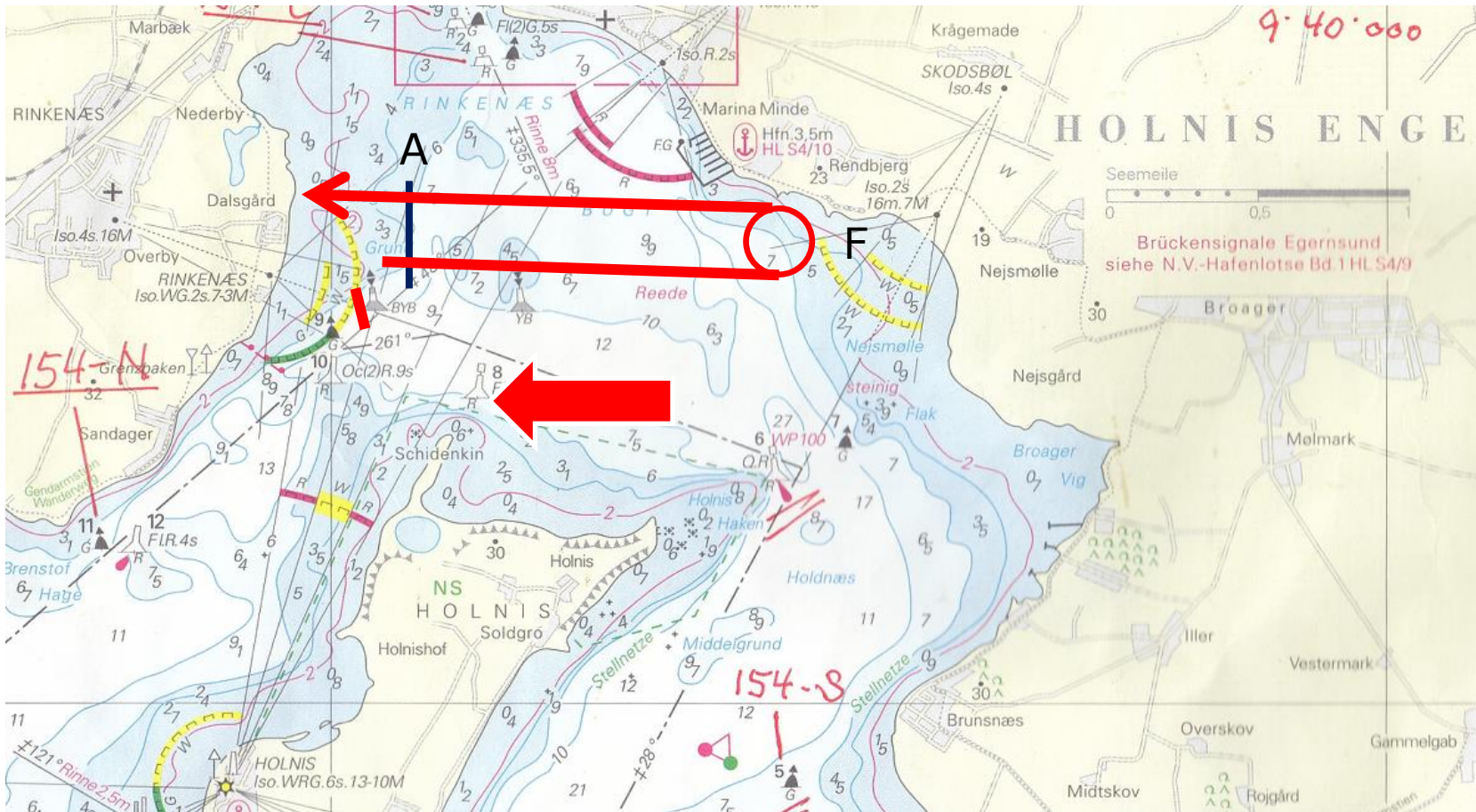
U - 2

**NORDØST**  
**2,5 Mil**  
**Kryds 1,25 Mil**  
**Lænsestart**



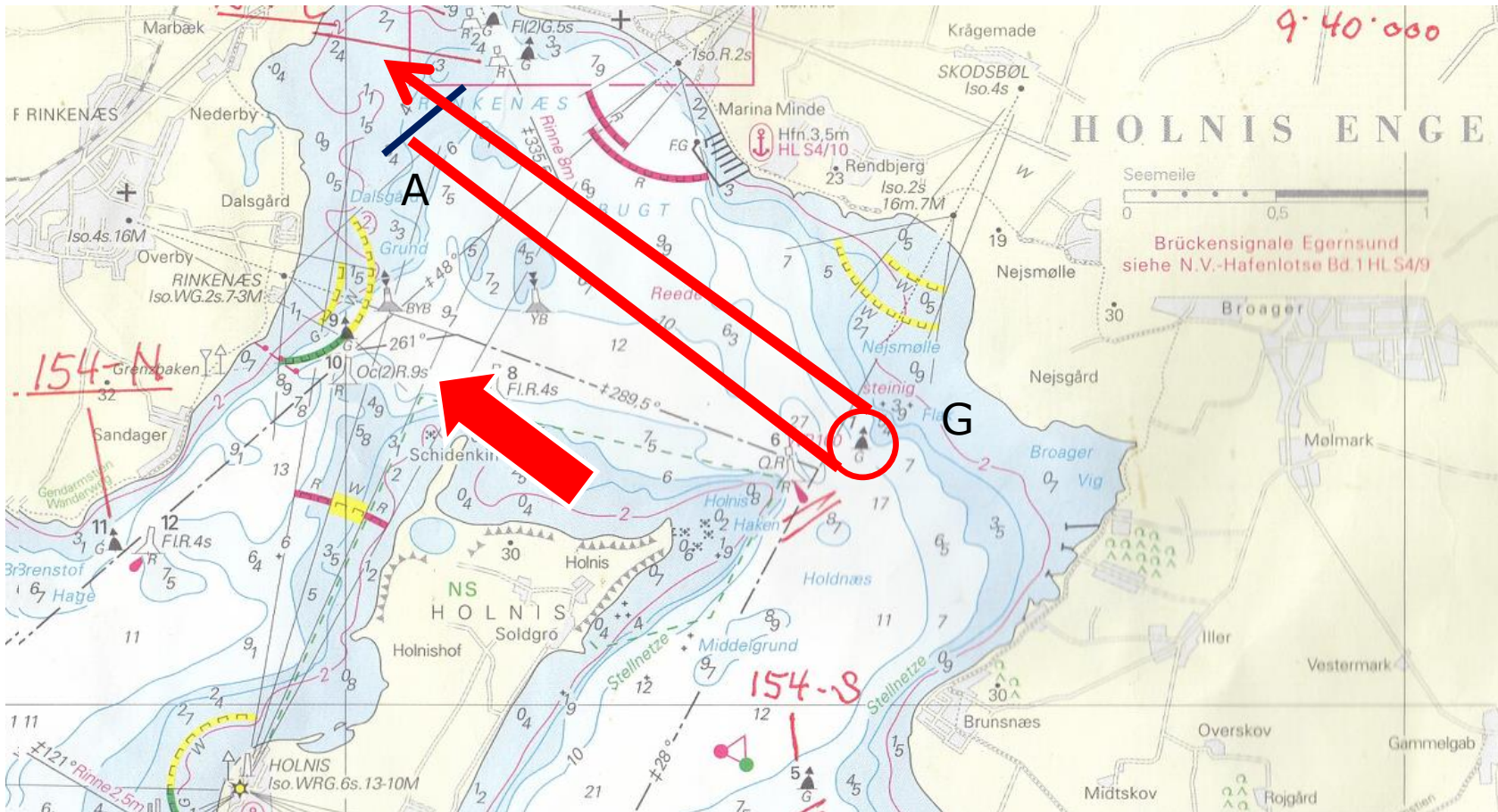
U - 3

ØST  
2 Mil  
Kryds 1 Mil  
Krydsstart



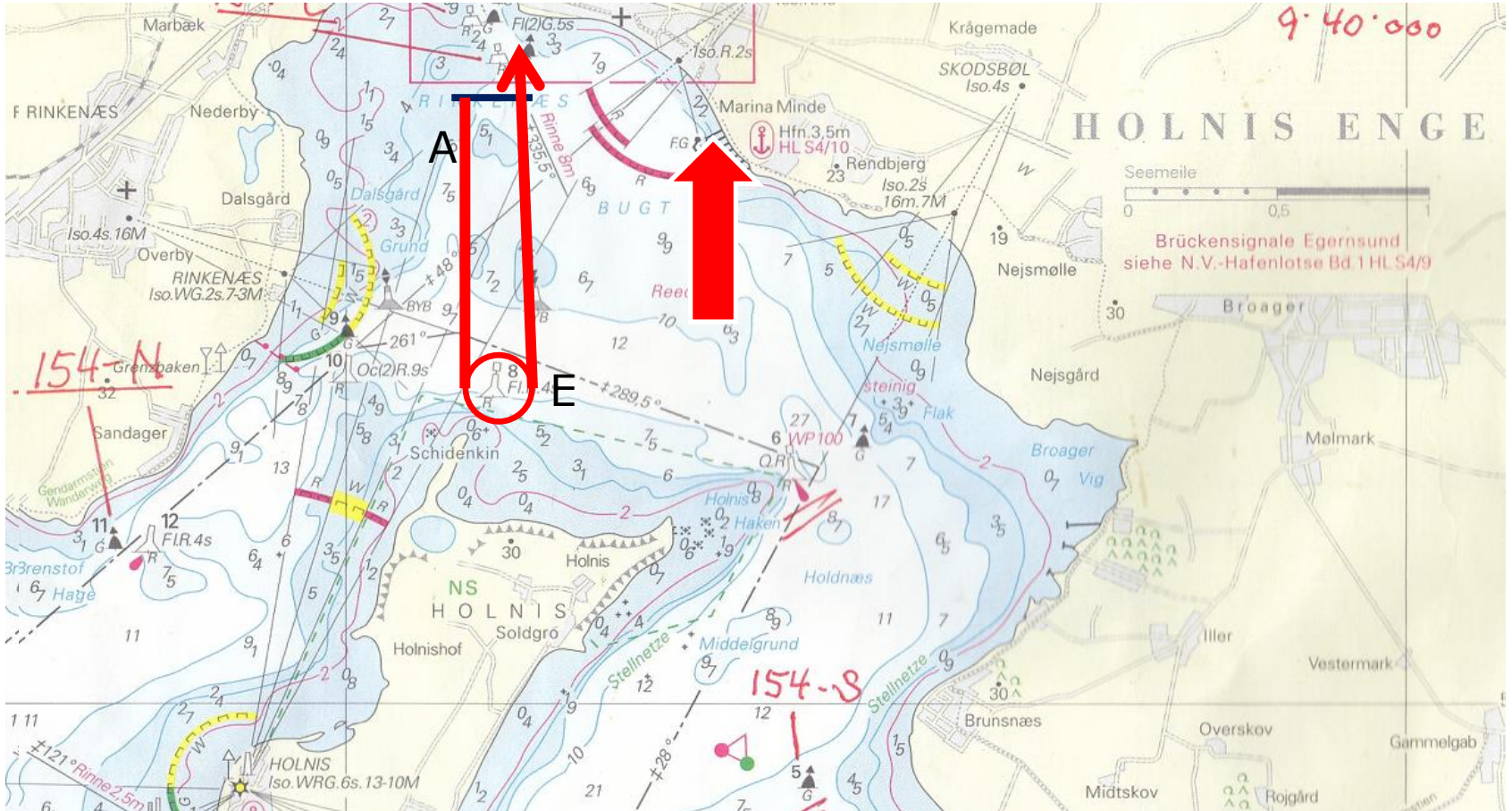
**U - 4**

**SYDØST**  
**3 Mil**  
**Kryds 1,5 Mil**  
**Krydsstart**



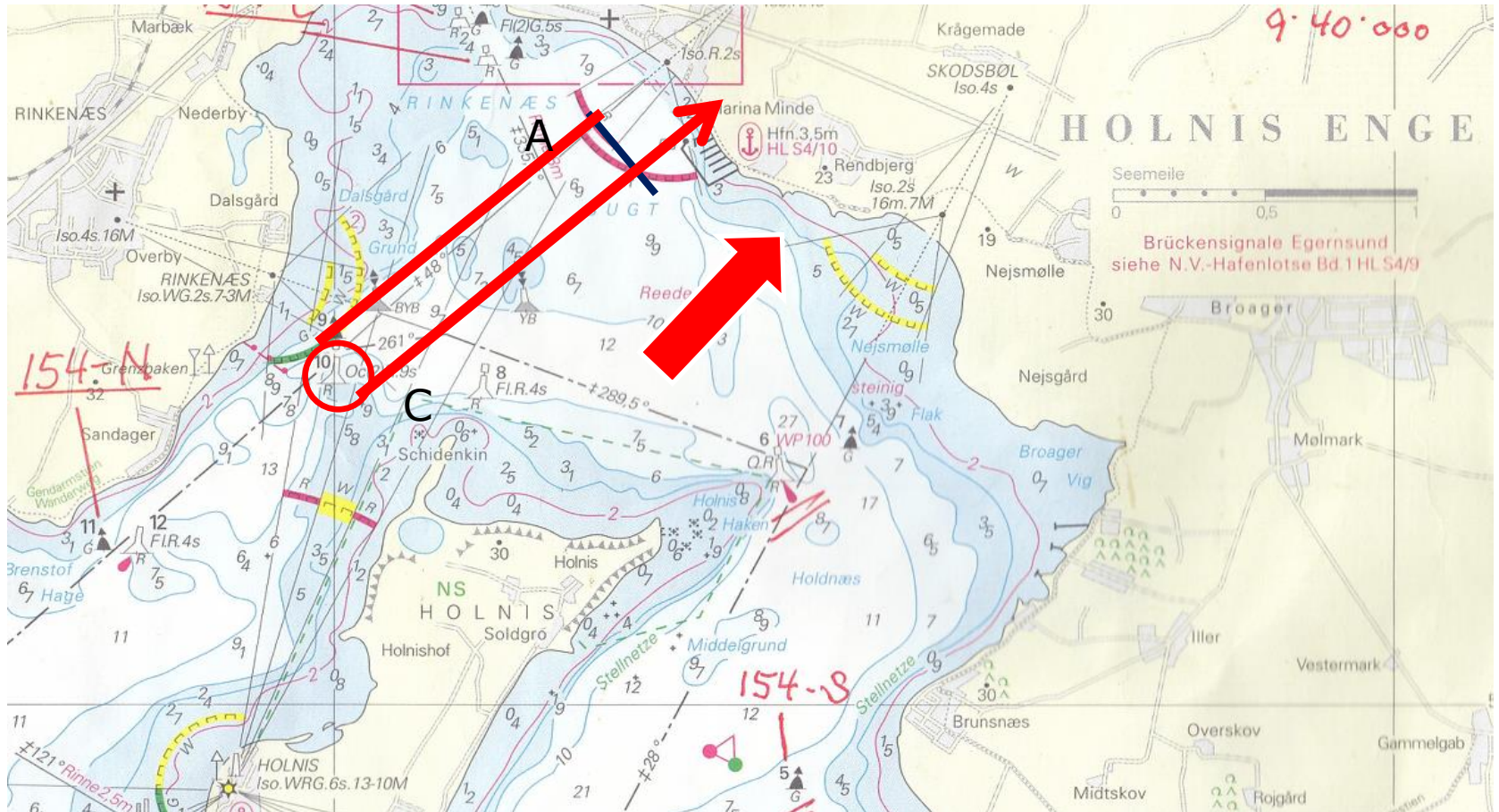
**U - 1**

**SYD**  
**2 Mil**  
**Kryds 1 Mil**  
**Krydsstart**



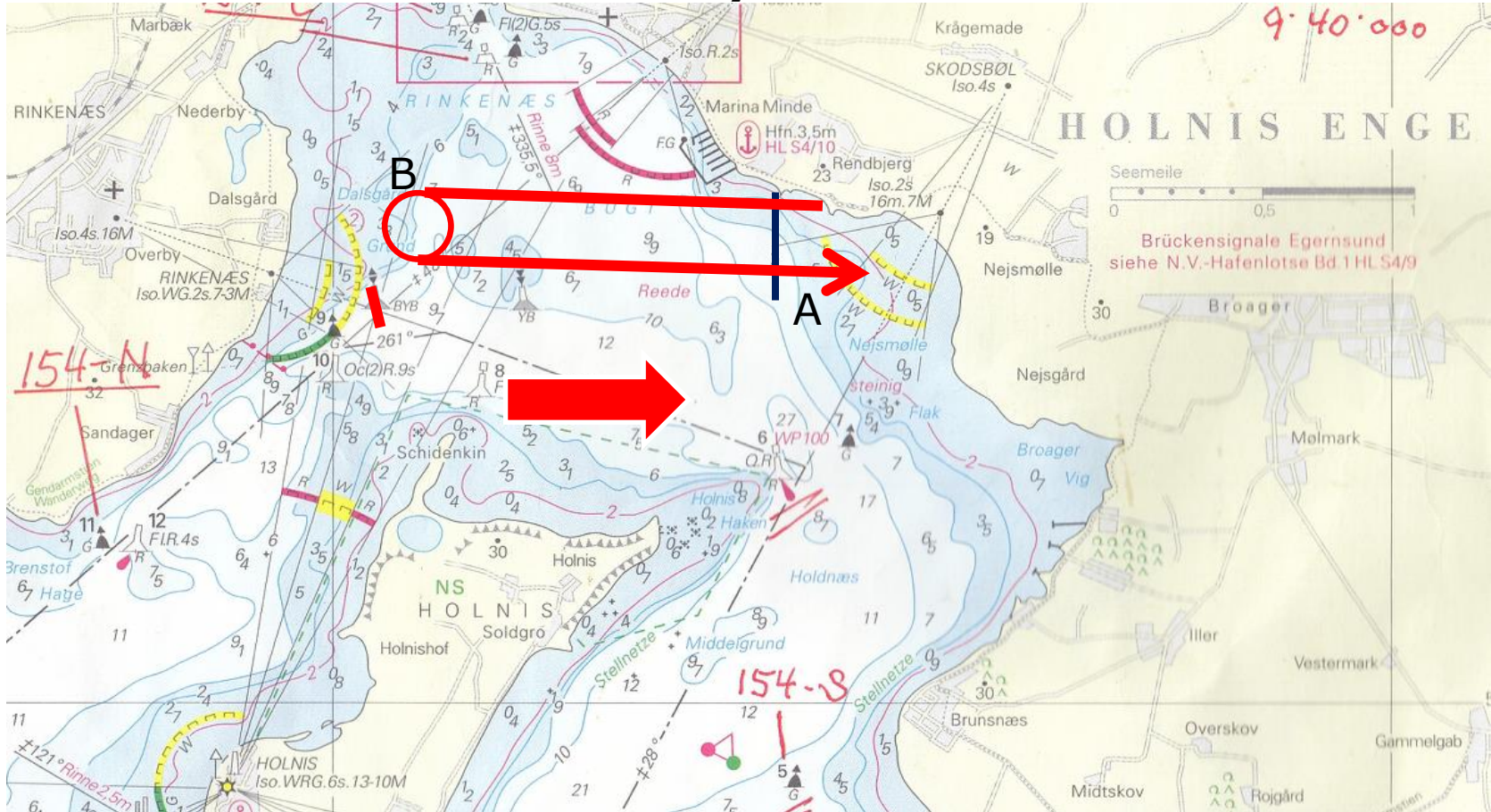
**U - 2**

**SYDVEST**  
**2,5 Mil**  
**Kryds 1,25 Mil**  
**Krydsstart**



**U - 5**

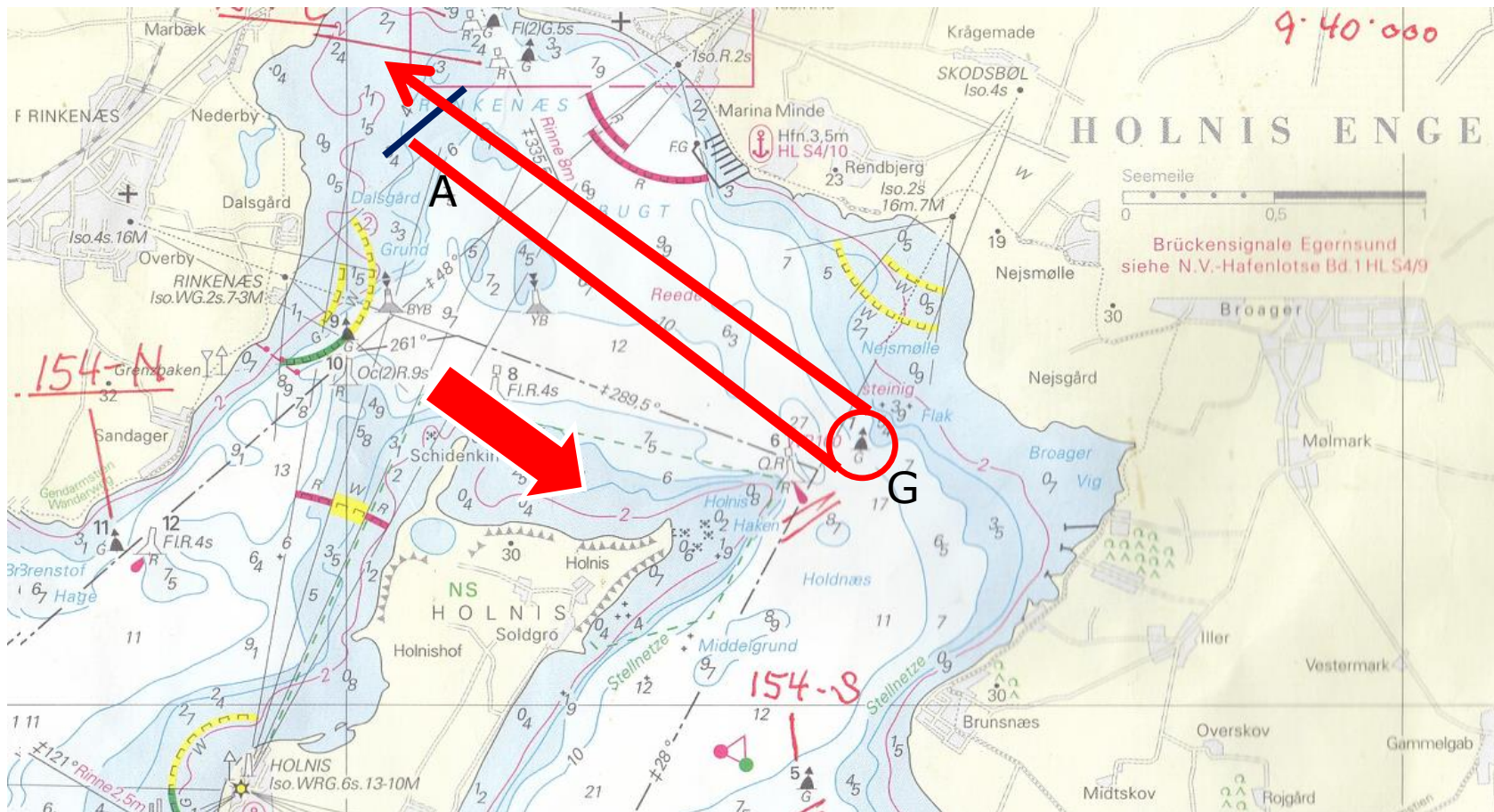
**VEST  
2 Mil  
Kryds 1 Mil  
Krydsstart**





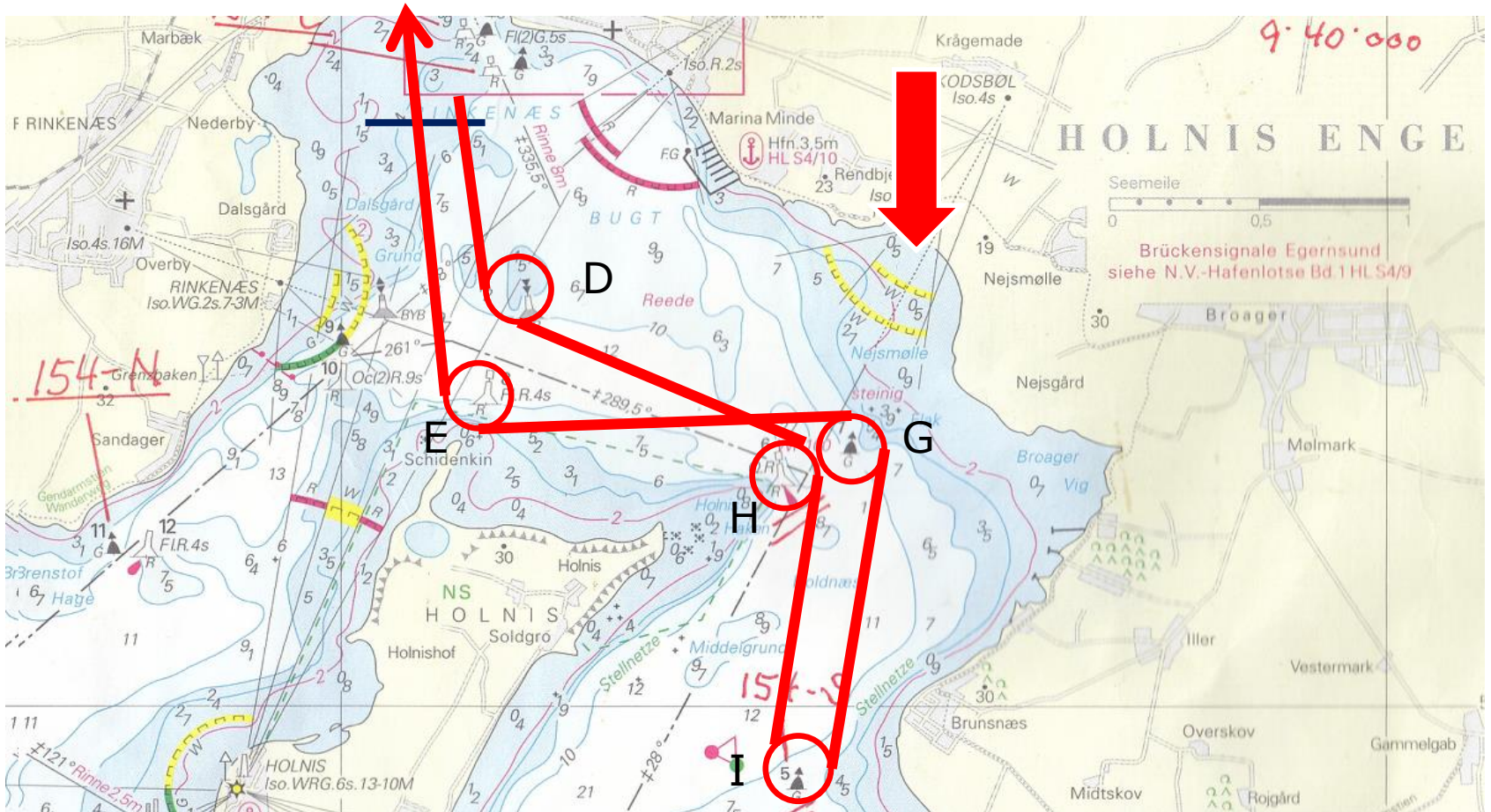
U - 4

**NORDVEST**  
**3 Mil**  
**Kryds 1,5 Mil**  
**Lænsestart**



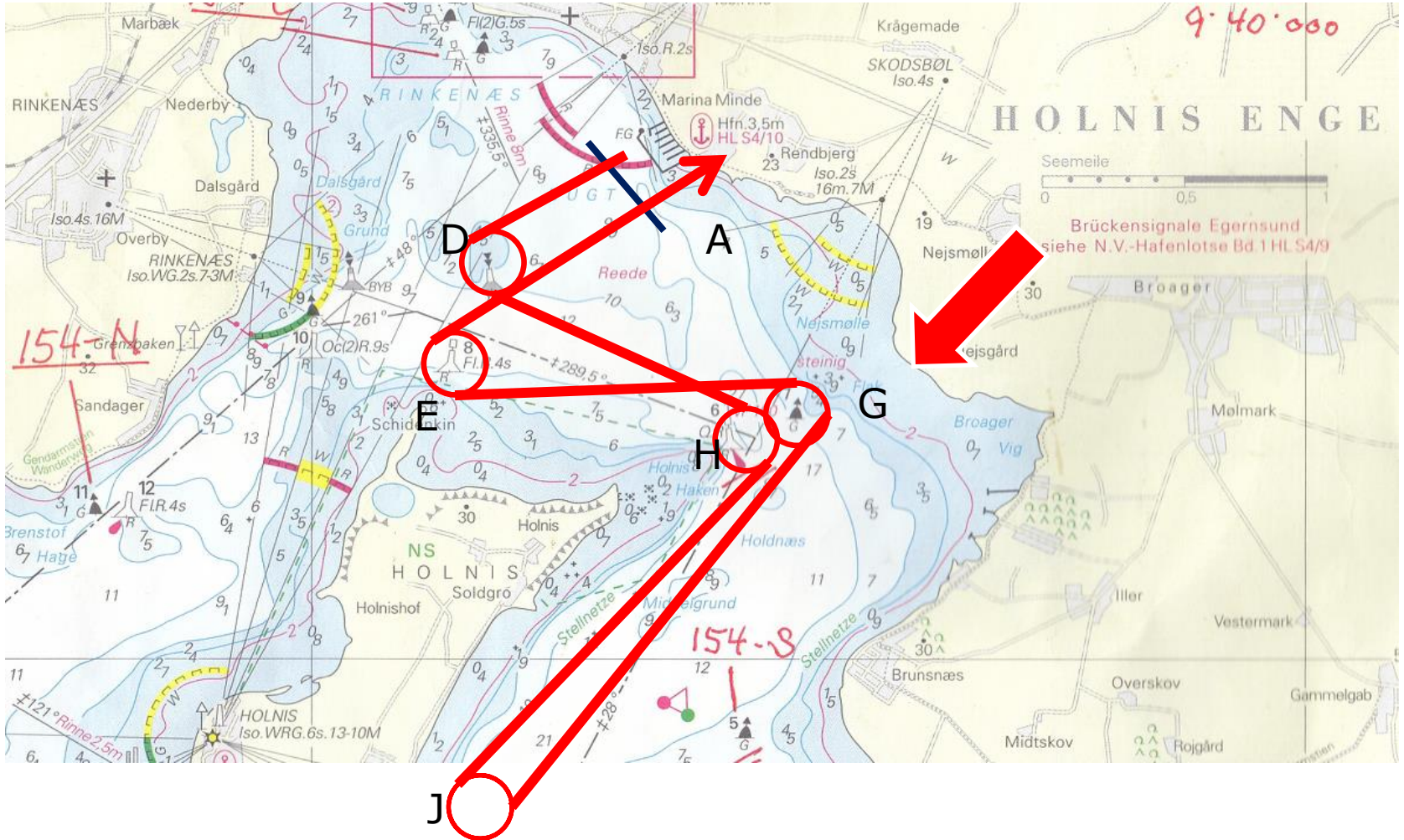
**C - 1**

**NORD  
6 Mil  
Kryds 2 Mil  
Lænsestart**



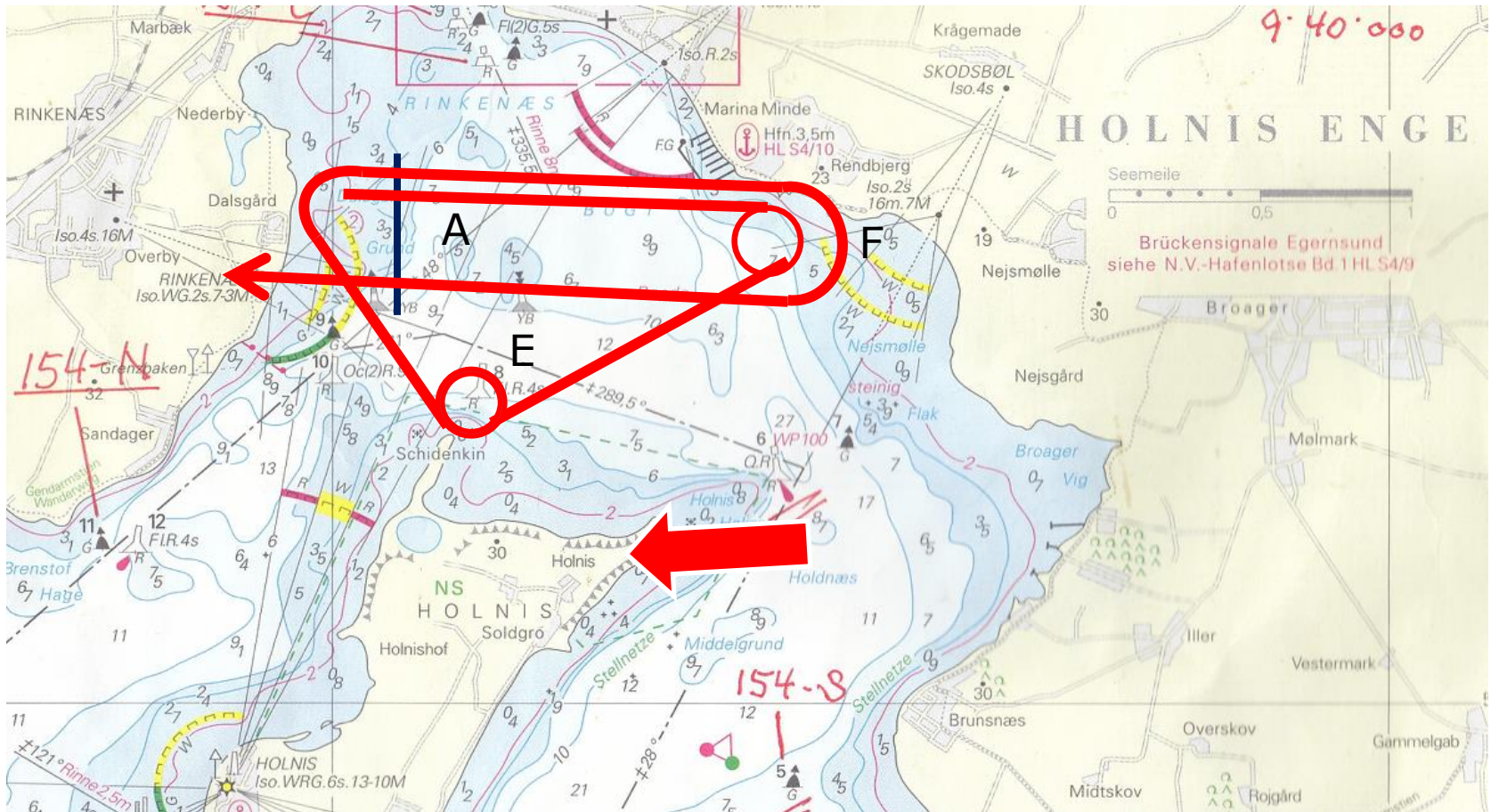
C - 2

**NORDØST**  
**7 Mil**  
**Kryds 2,5 Mil**  
**Lænsestart**



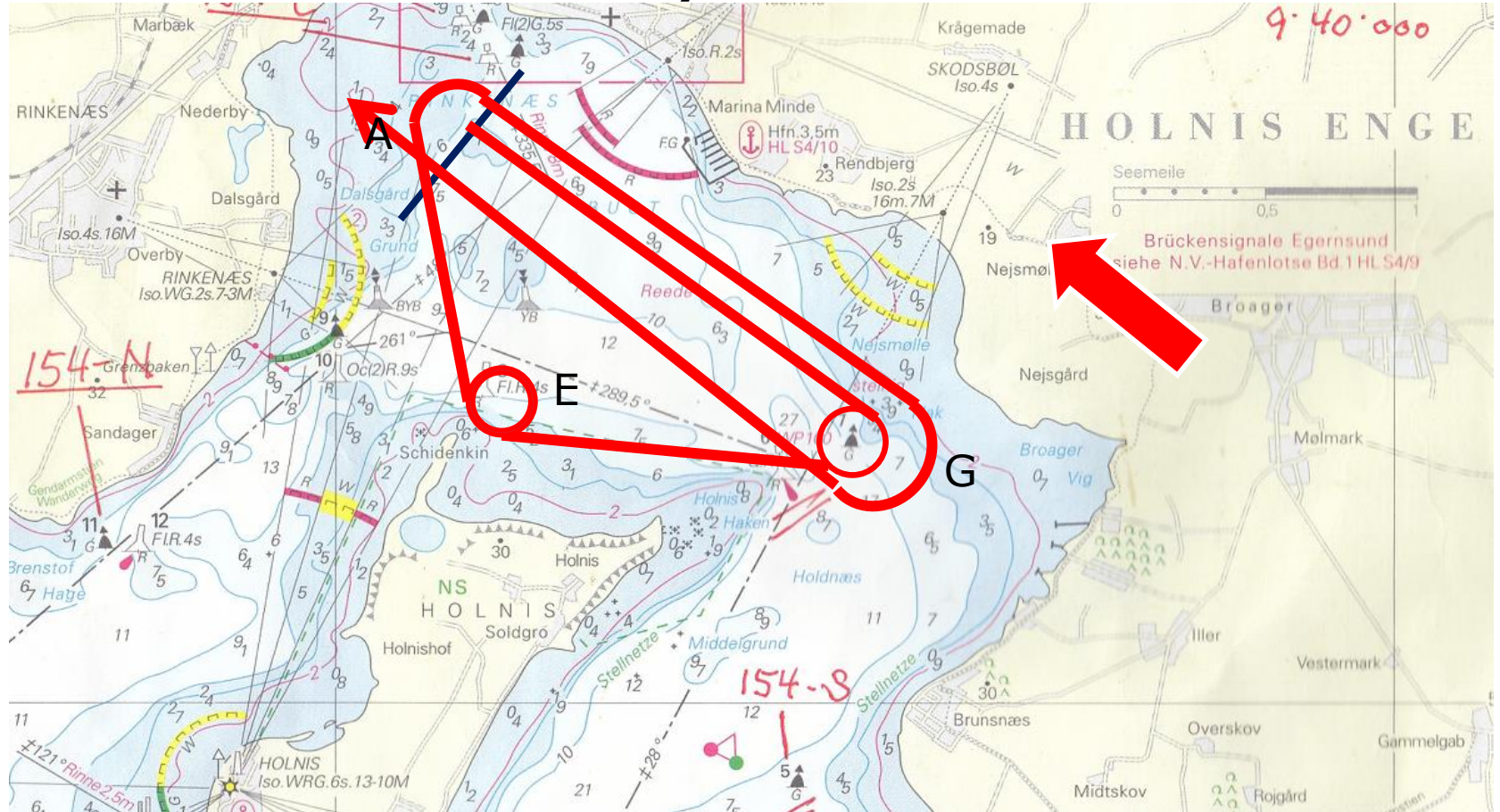
C - 3

ØST  
5 Mil  
Kryds 2 Mil  
Krydsstart



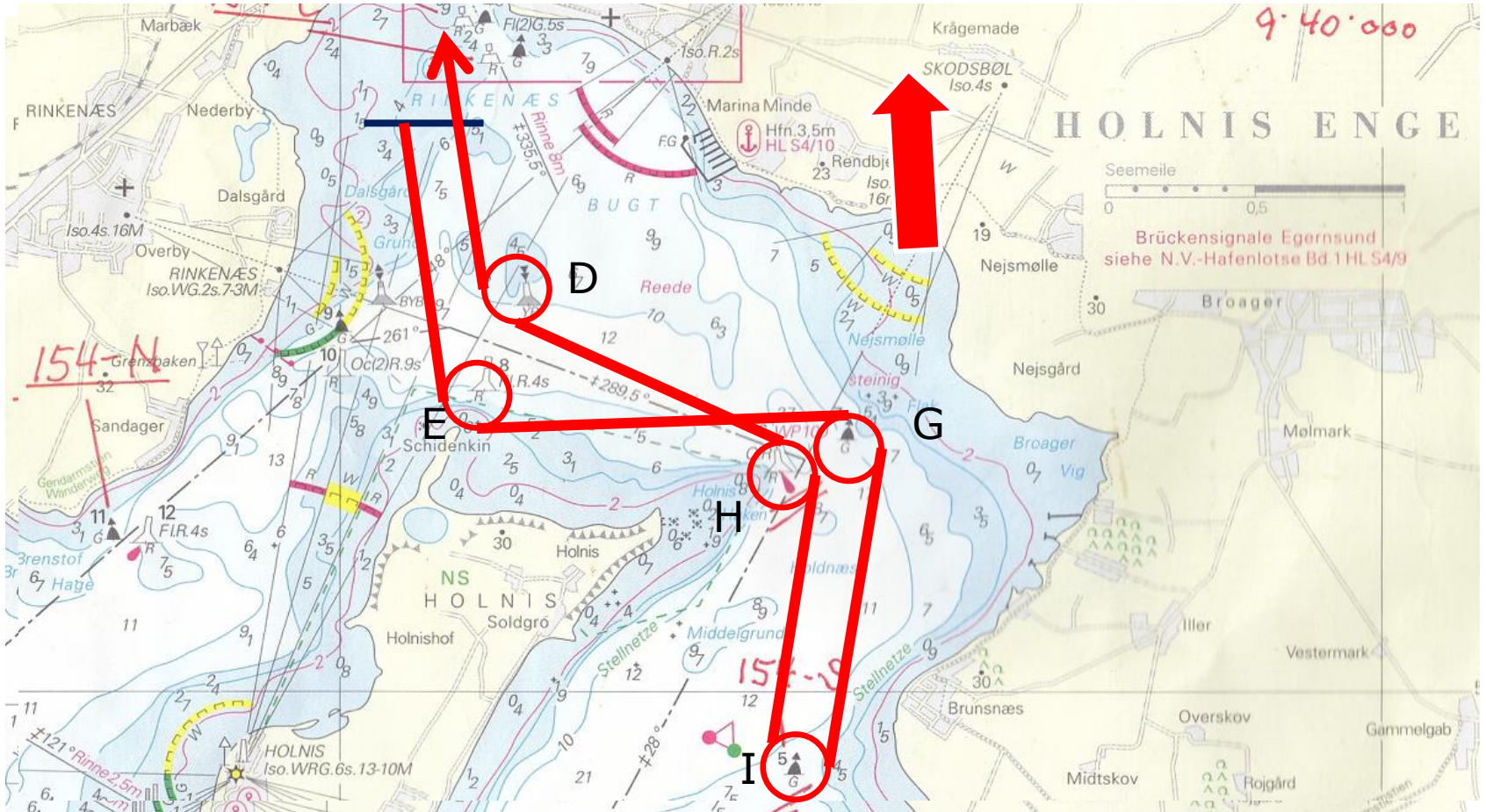
C - 4

**SYDØST**  
**7 Mil**  
**Kryds 3 Mil**  
**Krydsstart**



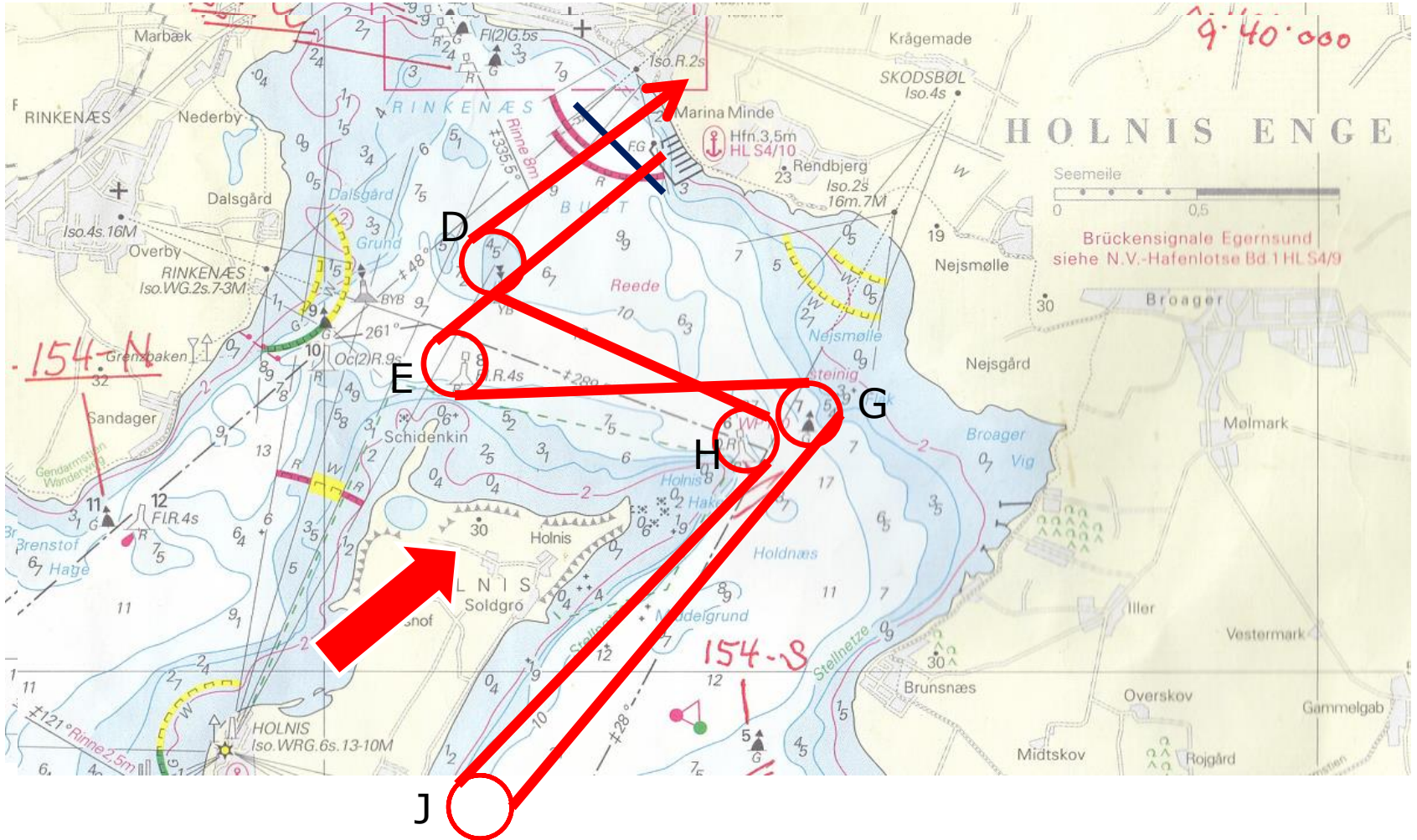
C - 5

**SYD**  
**6 Mil**  
**Kryds 2 Mil**  
**Krydsstart**



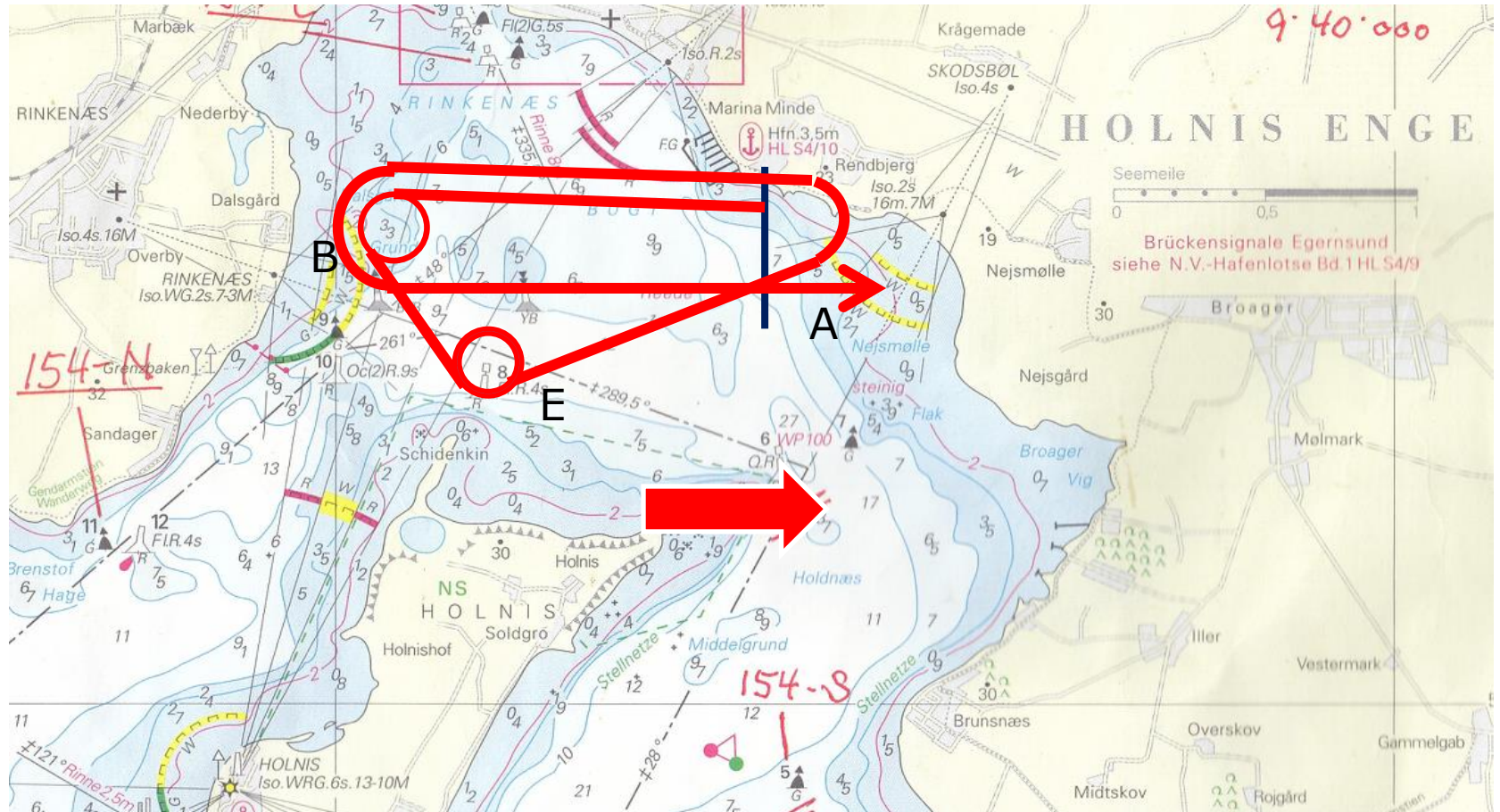
C - 6

**SYDVEST**  
**6,5 Mil**  
**Kryds 2,5 Mil**  
**Krydsstart**



C - 7

VEST  
5 Mil  
Kryds 2 Mil  
Krydsstart





C - 8

**NORDVEST**  
**7 Mil**  
**Kryds 3 Mil**  
**Lænsestart**

